



Belmont Street, Chalk Farm

Price £3,395 pw





Chappell Loft on Belmont Street is a sophisticated Victorian industrial building, featuring three spacious bedrooms, which are designed for comfort and style. With three modern bathrooms, the property ensures convenience and privacy. The inviting reception area sets the tone for the home, offering a welcoming space for relaxation and entertainment as well as a large balcony.

The property further benefits from a spectacular Club Lounge providing residents with a private VIP entertainment venue for relaxation and entertaining. Facilities include a lounge, bespoke cocktail bar/dj booth, party/club sound/lighting system; 183-inch cinema screen, swimming pool, spa pool and gymnasium.

This loft seamlessly blends contemporary design with practical functionality, providing a desirable living experience in the heart of Belmont Street.





Features

- 3 Bedrooms
- 3 Bathrooms
- 1 Reception
- Balcony

FLAT 5
269.1 sqm
2897 sqft

LIVING
83.2 sqm
895.6 sqft

BALCONY
13.9 sqm
150 sqft

MASTER BEDROOM
31.8 sqm
342 sqft

DRESSING ROOM
7.9 sqm
85 sqft

UTILITY

KITCHEN
31.4 sqm
338 sqft

WC

A/C

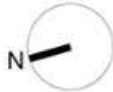
EN-SUITE
10.7 sqm
115 sqft

HALLWAY
28.4 sqm
306 sqft

BEDROOM 2
28.1 sqm
302 sqft

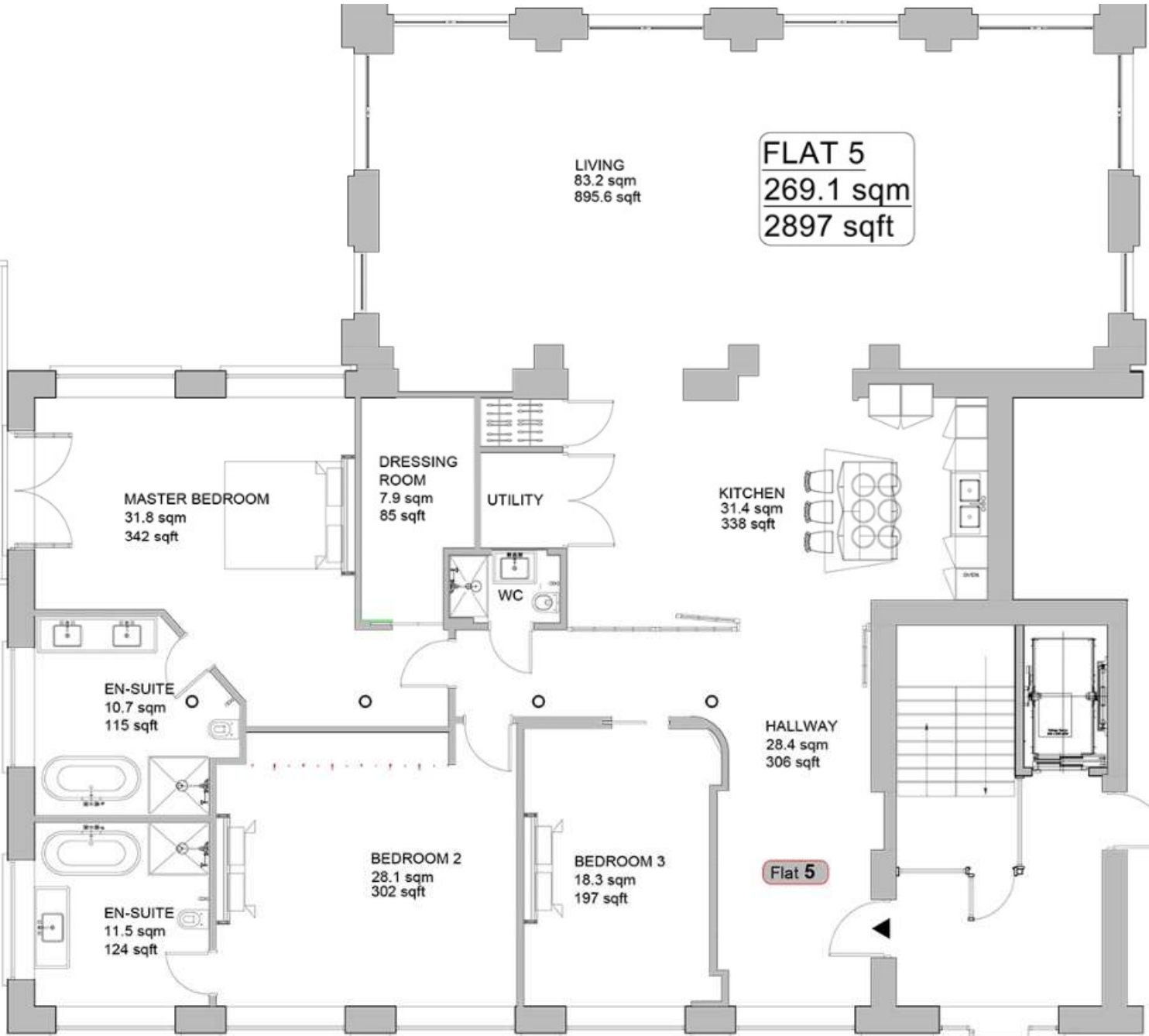
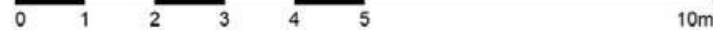
BEDROOM 3
18.3 sqm
197 sqft

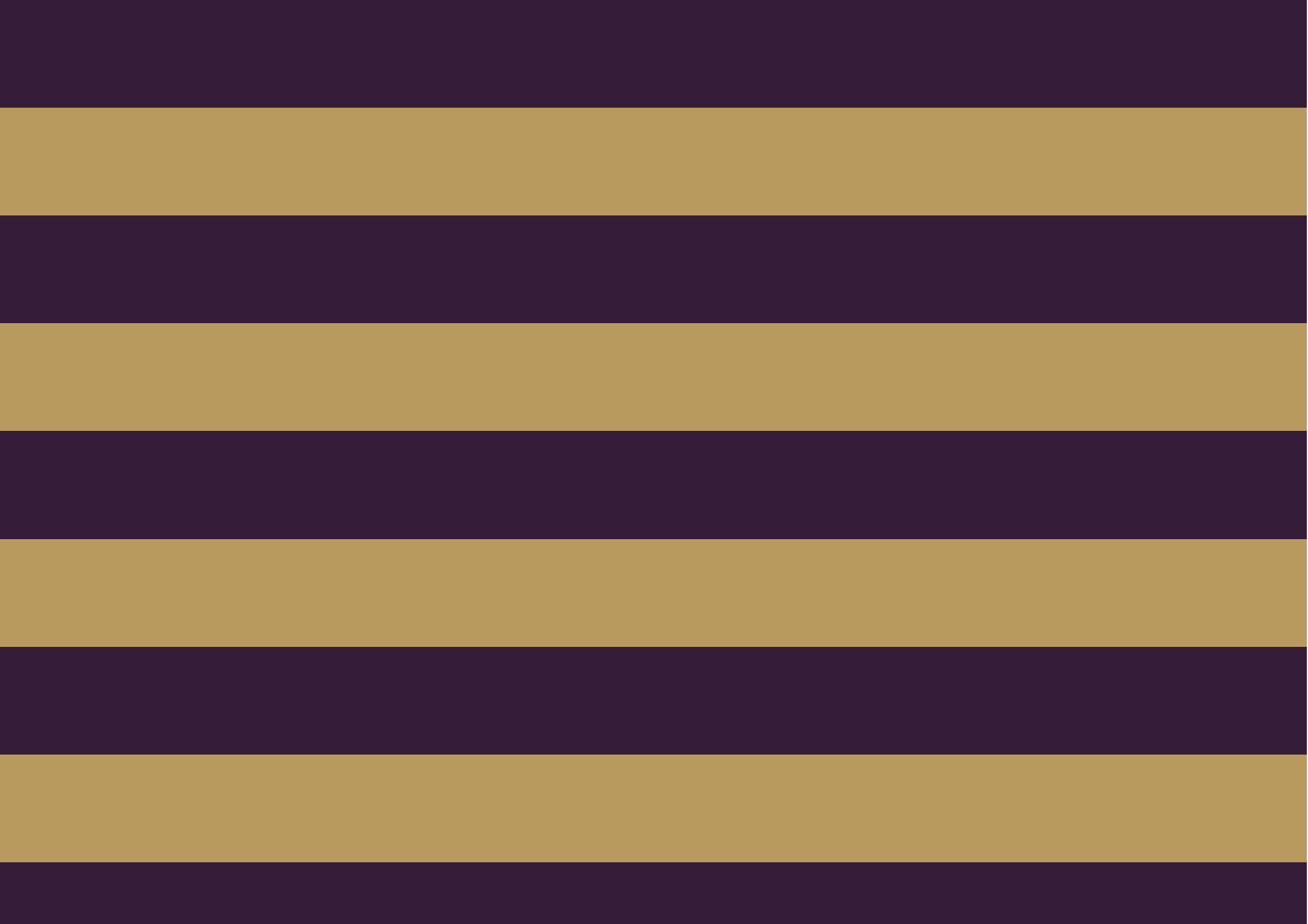
EN-SUITE
11.5 sqm
124 sqft



**Third Floor -
Flat 5**
10A Belmont Street,
NW1 8HH

Scale 1:100 @A4







Global 1
23 Berkeley Square
London W1J 6JE
T: +44 (0)20 3355 0191 W: www.theglobal1.com