




Harley House, Regent's Park

Price £2,385,000





This stunning two bedroom apartment in an immaculate condition throughout, located in the highly desirable Harley House moments from Regent`s Park. The property comprises of a spacious bright and airy reception room with direct access to an open-plan fully equipped kitchen which would be perfect for entertaining, two large double bedrooms with ample storage and fully tiled three piece en-suites, a well sized separate study and an additional guest WC. The property has been renovated and decorated to an excellent standard. Further benefits include 24 hour concierge and under floor heating.

LOCAL AMENITIES:

This property is ideally situated just minutes away from the bars and restaurants of Marylebone, the shopping on Oxford Street and the tranquillity of Regents Park are also close by.

LOCAL TRANSPORT LINKS:

This property is located close to Oxford Circus (Victoria, Central, and Bakerloo lines), Regents Park (Bakerloo line) and Great Portland Street (Circle, Hammersmith and City and Metropolitan lines) Underground stations.







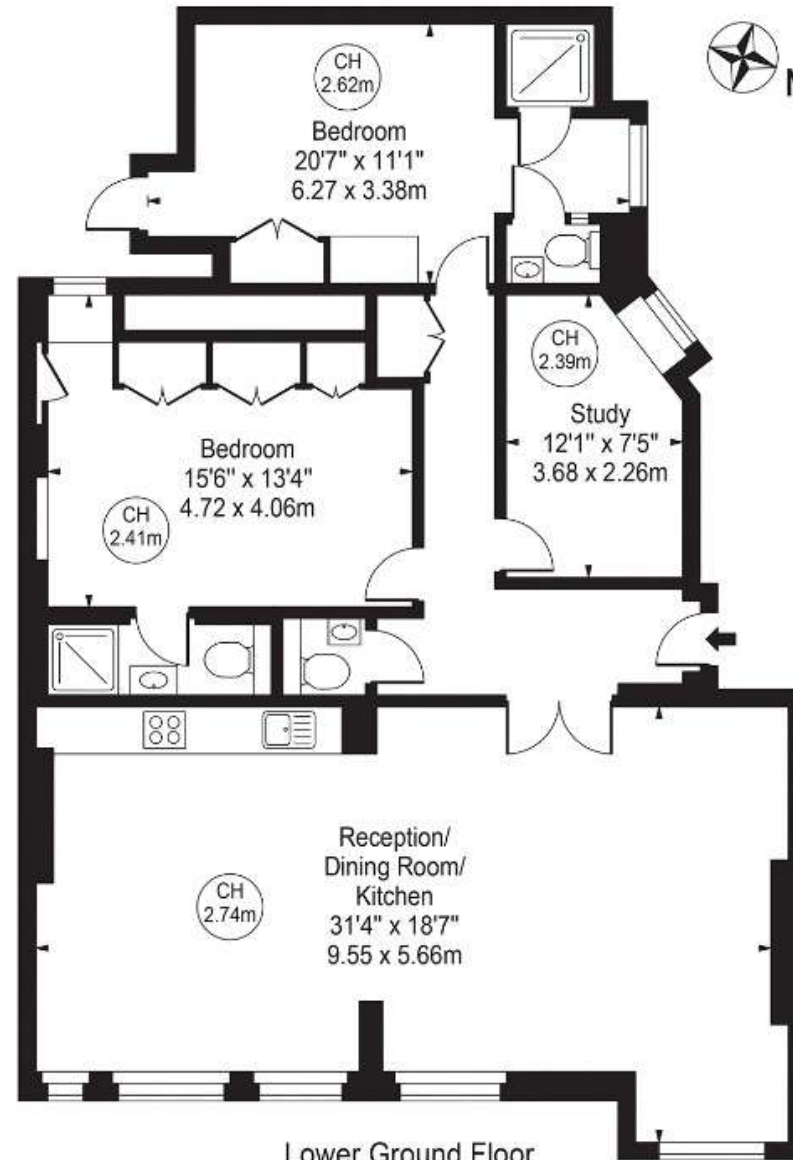
Features

- 2 Bedrooms
- 3 Bathrooms
- 1 Reception
- Study



Harley House

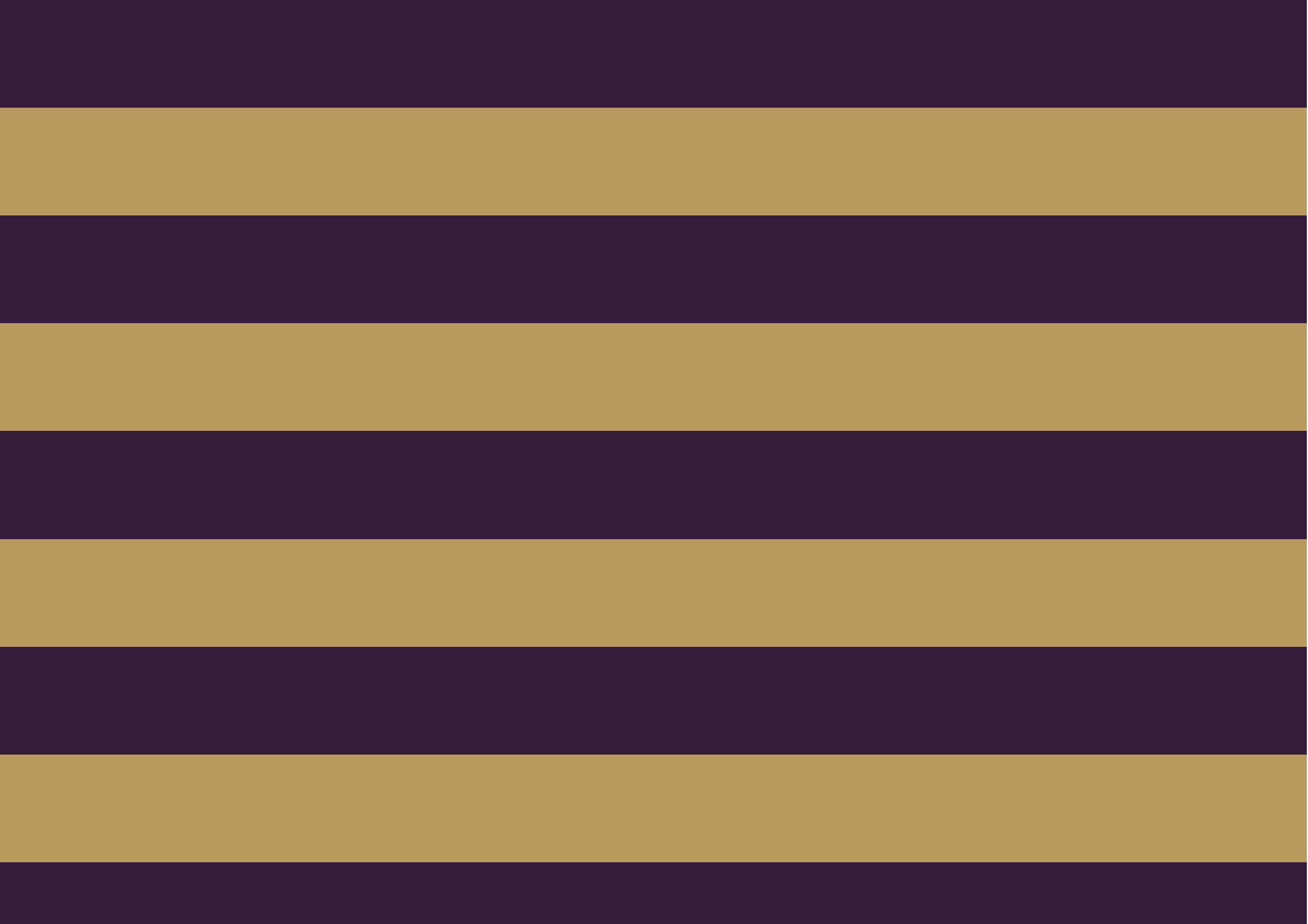
Approx. Gross Internal Area 1188 Sq Ft - 110.37 Sq M



Lower Ground Floor

For Illustration Purposes Only - Not To Scale

This floor plan should be used as a general outline for guidance only and does not constitute in whole or in part an offer or contract. Any intending purchaser or lessee should satisfy themselves by inspection, searches, enquiries and full survey as to the correctness of each statement. Any areas, measurements or distances quoted are approximate and should not be used to value a property or be the basis of any sale or let.





Global 1
23 Berkeley Square
London W1J 6JE
T: +44 (0)20 3355 0191 W: www.theglobal1.com