




Imperial House, Kensington

Price £5,500 pw





Step into the epitome of modern luxury at Imperial House, Kensington! This exclusive and contemporary building is home to 11 stunning apartments, each a masterpiece of design and functionality.

Prepare to be mesmerised by the epitome of luxury living: a truly spectacular and unique refurbished interior designed duplex Penthouse apartment, spanning an impressive 3,664 Sq ft, nestled within a boutique modern building in the vibrant heart of fashionable Kensington.

With amenities such as a lift service, an on-site porter, and a dedicated building manager, every aspect of your living experience has been meticulously catered to. Whether you're seeking convenience, comfort, or elegance, Imperial House exceeds all expectations.

But the luxury doesn't end there. This remarkable apartment also features ample storage space, underfloor heating, a lift service, built-in audiovisual system, and air conditioning, ensuring the utmost comfort and convenience at every turn.

Conveniently located just moments away from South Kensington underground stations, this is city living at its finest. Experience the epitome of luxury with remote live video viewings by appointment and virtual tours available*. Don't miss your chance to call this breathtaking Penthouse apartment home.



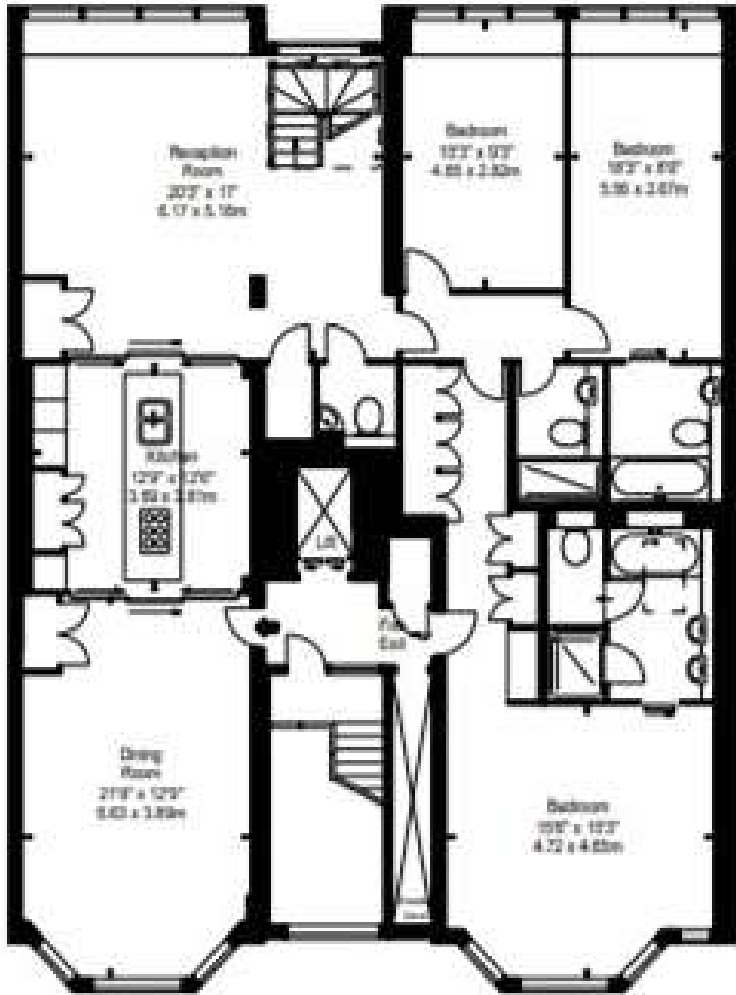




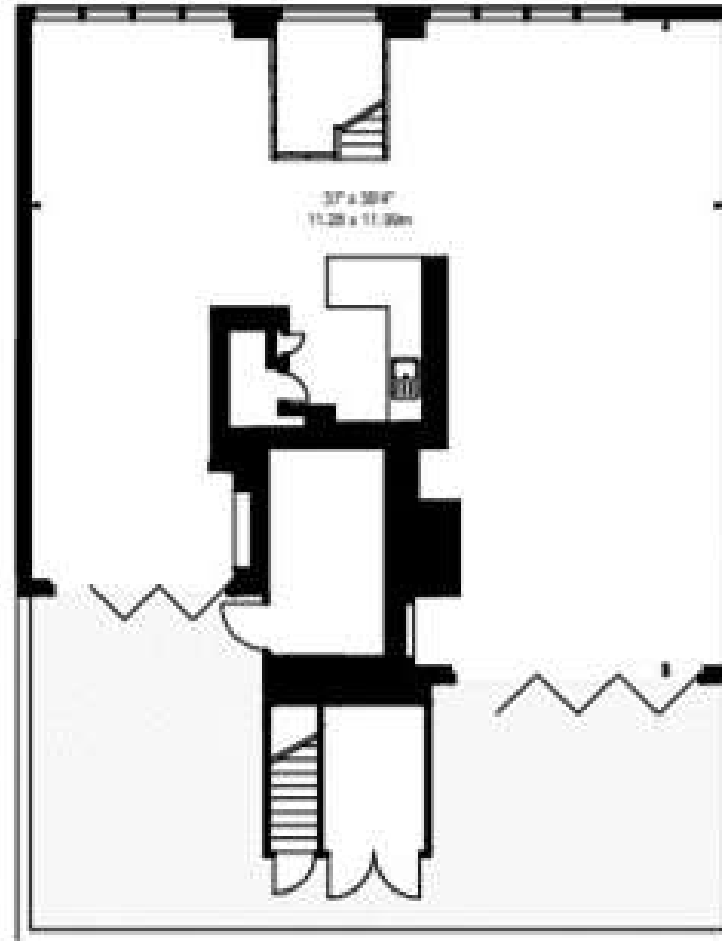
Features

- 3 Bedrooms
- 3 Bathrooms
- 1 WC
- 1 Living room
- Concierge
- Private Roof Gardens

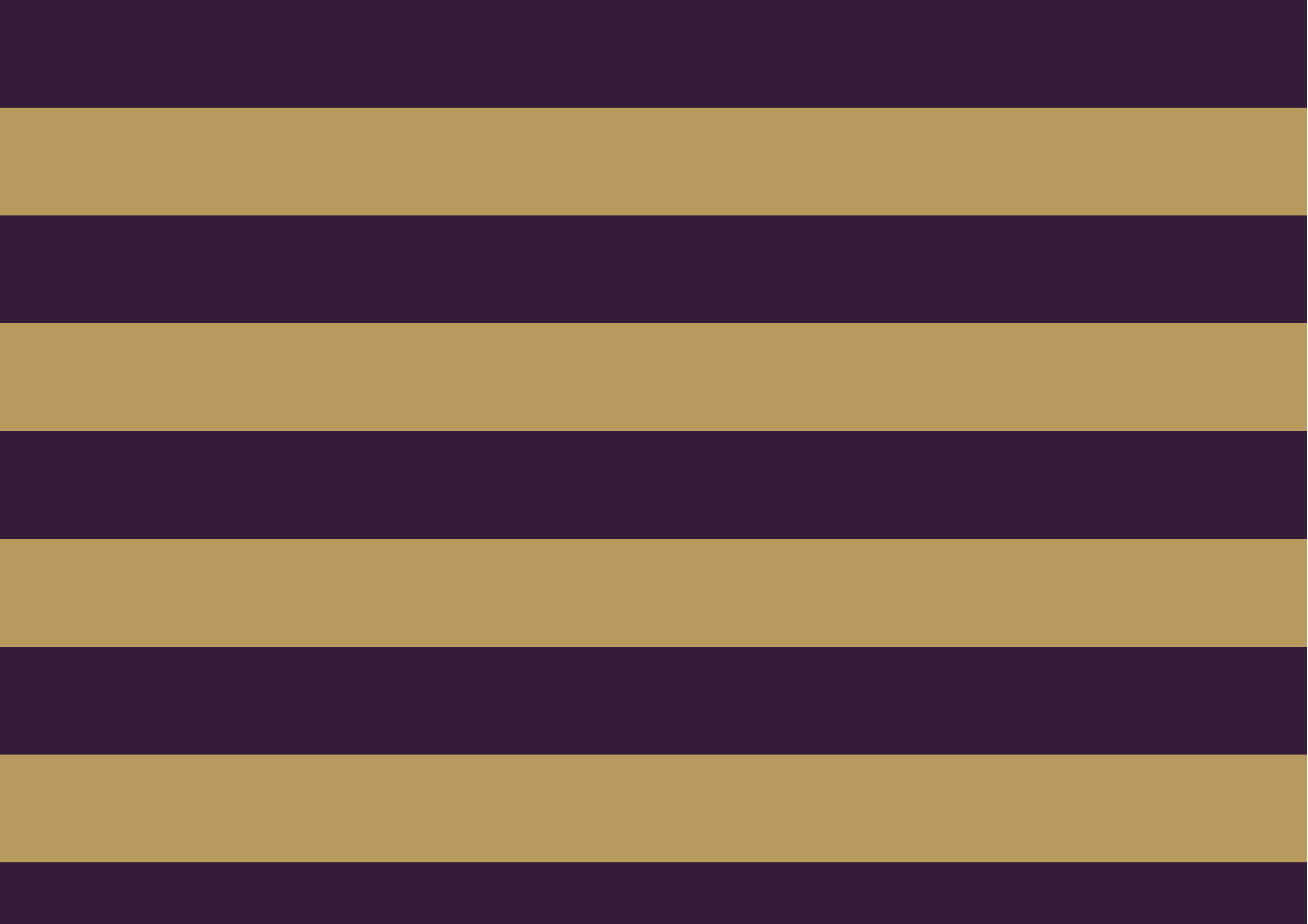




FIFTH FLOOR



SIXTH FLOOR





Global 1
23 Berkeley Square
London W1J 6JE
T: +44 (0)20 3355 0191 W: www.theglobal1.com