




One Hyde Park, Knightsbridge

Price £25,000 pw





An exceptional three bedroom duplex apartment to rent in this much sought after development in Knightsbridge. One Hyde Park is possibly the most exclusive address in the World. The combination of leading architects, designers, artists and the Mandarin Oriental Hotel Group ensures that One Hyde Park delivers a unique experience and service on every level. Internationally renowned interior designers Candy & Candy have designed all the communal areas including the spa and recreation facilities. The apartment also comes with its own designated wine cellar, access to 24/7 concierge desk and Mandarin Oriental residents service. The apartment has an audio visual system and programmed lighting controls, fresh air supply, cooling and heating. The exclusive on-site leisure and spa facilities at One Hyde Park include private cinema, private events room for large parties, virtual experience room, squash court, gym, two private exercise studios, 21 metre ozone pool, Jacuzzi, two saunas, two steam rooms and two treatment rooms with en suite relaxation rooms. The apartment is fully furnished and is available now for Long Let.

LOCAL AMENITIES: In the heart of Knightsbridge close to the international designer shops and restaurants of Sloane Street and Knightsbridge and the lovely boutiques on Beauchamp Place, Harvey Nicolls and the famous Harrods. The world famous One Hyde Park residential development is at this location. This prime location is also within easy walking distance to the wide open spaces of Hyde Park. Both the VandA and the Science Museum are easily accessed as well as Imperial College. Well known Hotels in this area.

LOCAL TRANSPORT LINKS Knightsbridge, Hyde Park Corner, Sloane Square







Features

- 3 Bedrooms
- 3 Bathrooms
- Cinema room
- Gym
- Swimming pool
- Terrace
- 24/7 Concierge
- Sauna
- Jacuzzi

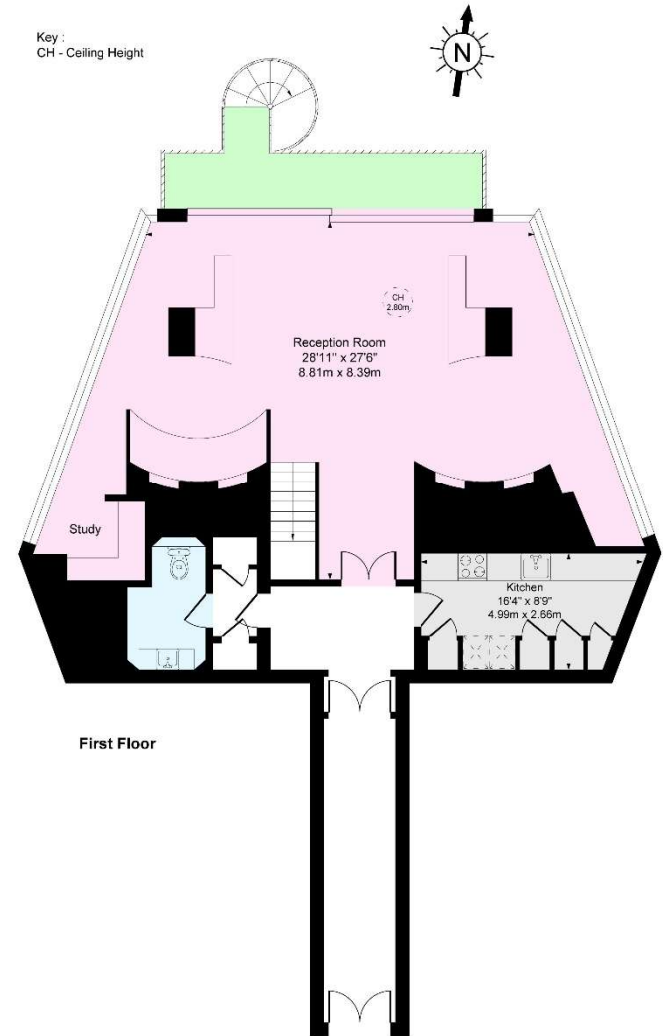
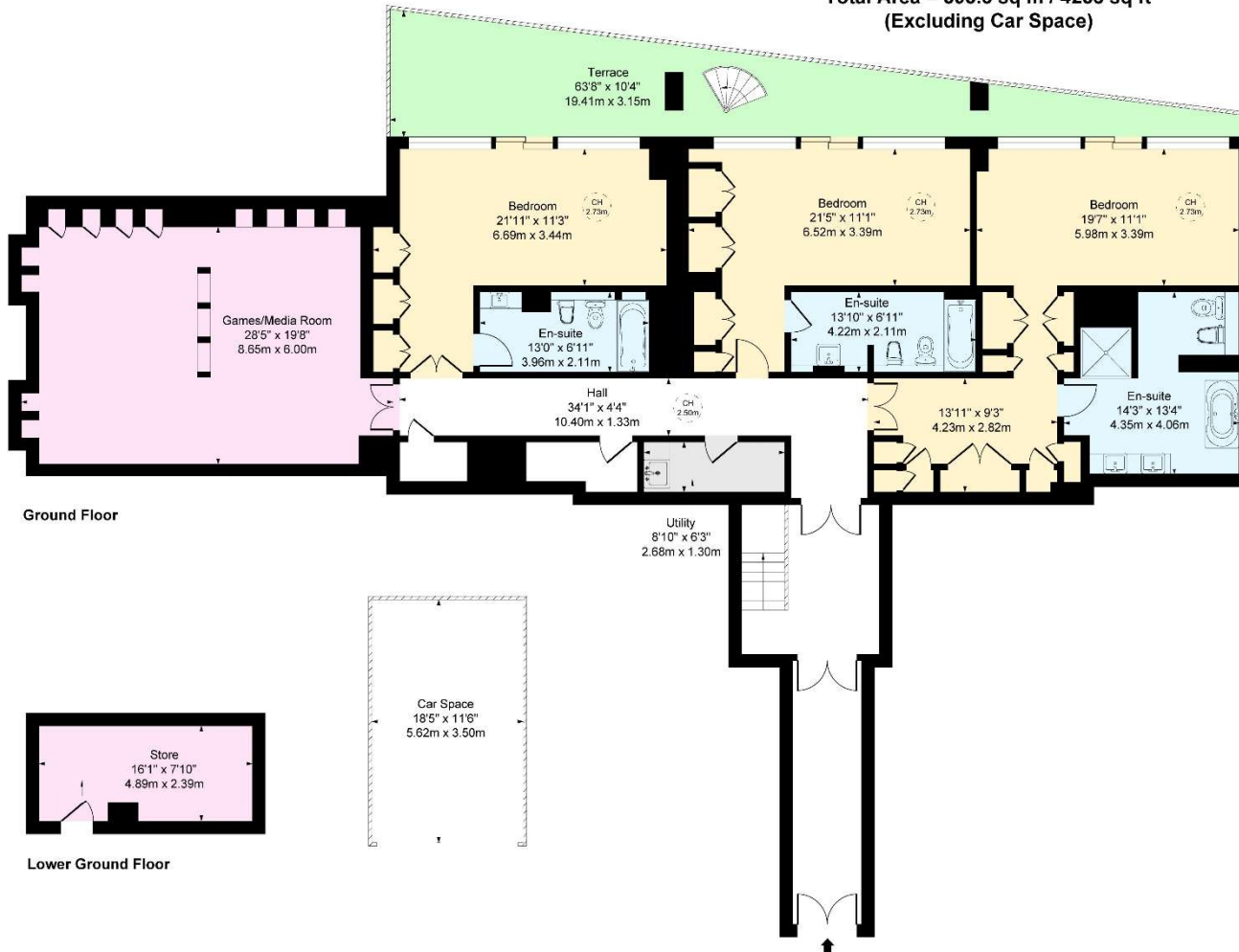


One Hyde Park, Knightsbridge, SW1X

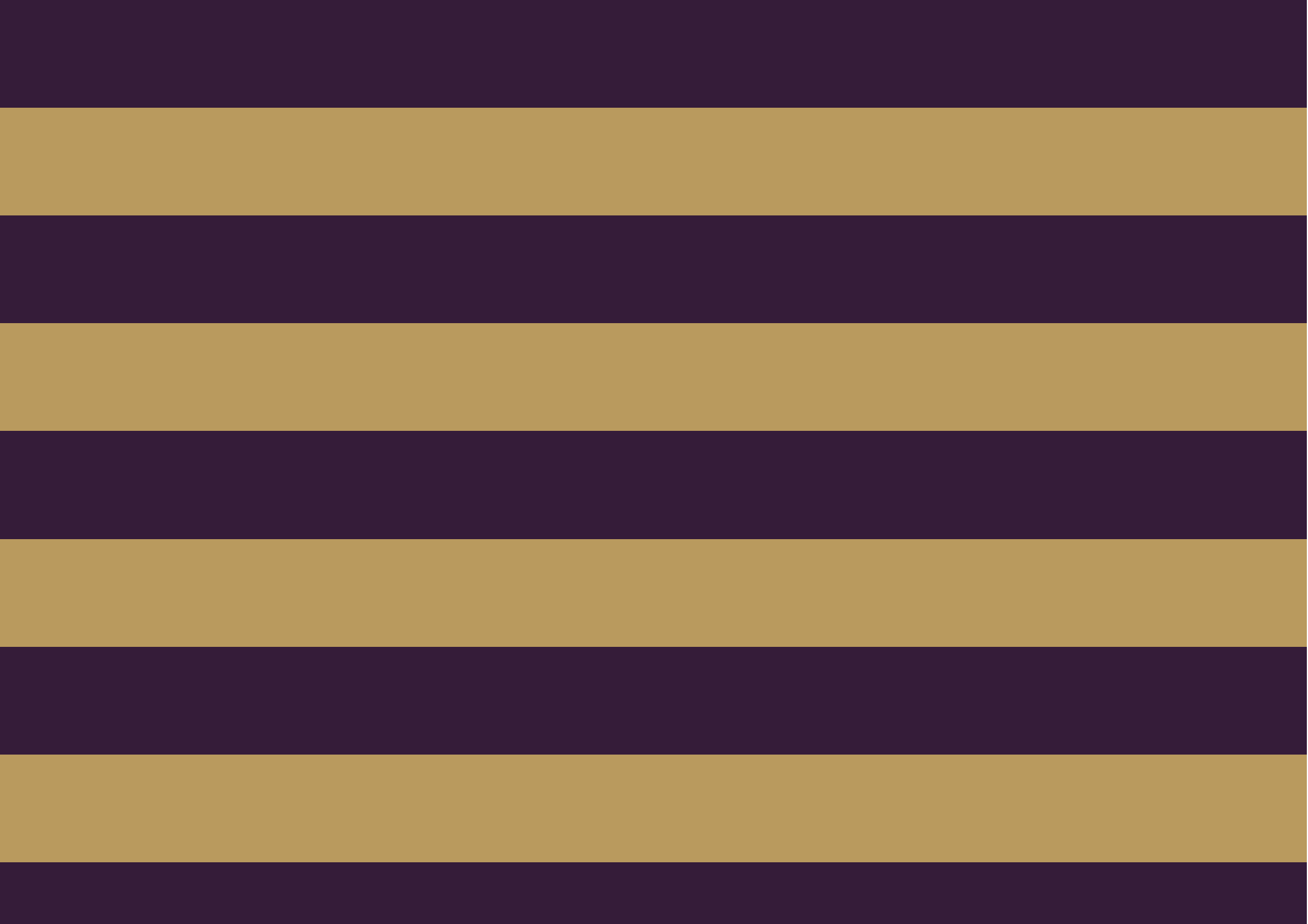
Approximate gross Internal Area = 381.6 sq m / 4107 sq ft

Storage Area = 11.9 sq m / 128 sq ft

Total Area = 393.5 sq m / 4235 sq ft
(Excluding Car Space)



This floor plan is for illustrative purposes only and must not be relied upon as a statement of fact.





Global 1
23 Berkeley Square
London W1J 6JE
T: +44 (0)20 3355 0191 W: www.theglobal1.com