




## **Damac Tower, Nine Elms**

Price £2,240,000





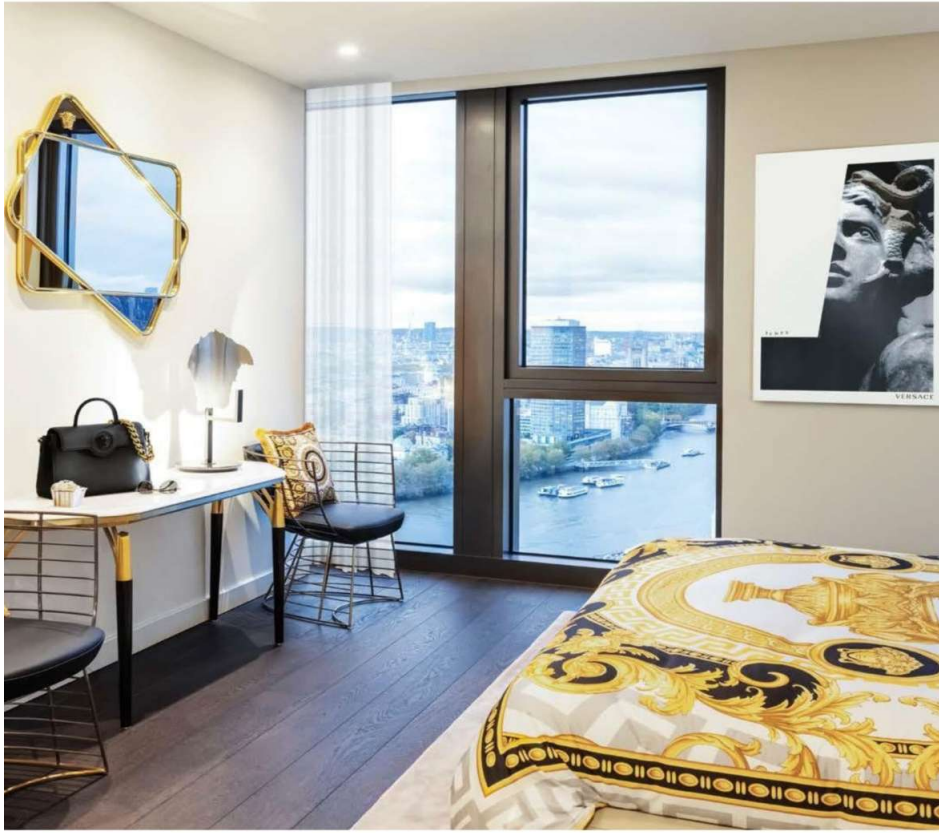
Damac Tower, gracing a distinctive London landmark, features a custom-designed façade across its 50 stories. This architectural marvel presents a premium assortment of 1, 2, and 3-bedroom luxury apartments, along with a limited selection of executive penthouses, all boasting lavish interiors designed by Versace Home.

Situated in the heart of Nine Elms, this new residential tower will bring you the ultimate in branded living experiences.

Finished to the highest standards, with stunning communal roof gardens to unwind and meander in.

Within the development, residents will get to enjoy the fantastic facilities which include a state of the art gymnasium, swimming pool, jacuzzi, residents lounge, secure parking (subject to additional price and availability).





NINE EL



NINE ELMS





## ***Features***

- 3 Bedrooms
- 3 Bathrooms
- 3 Living rooms
- Designed by Versace
- 24 hrs security
- Gym
- Swimming pool
- Communal Terrace

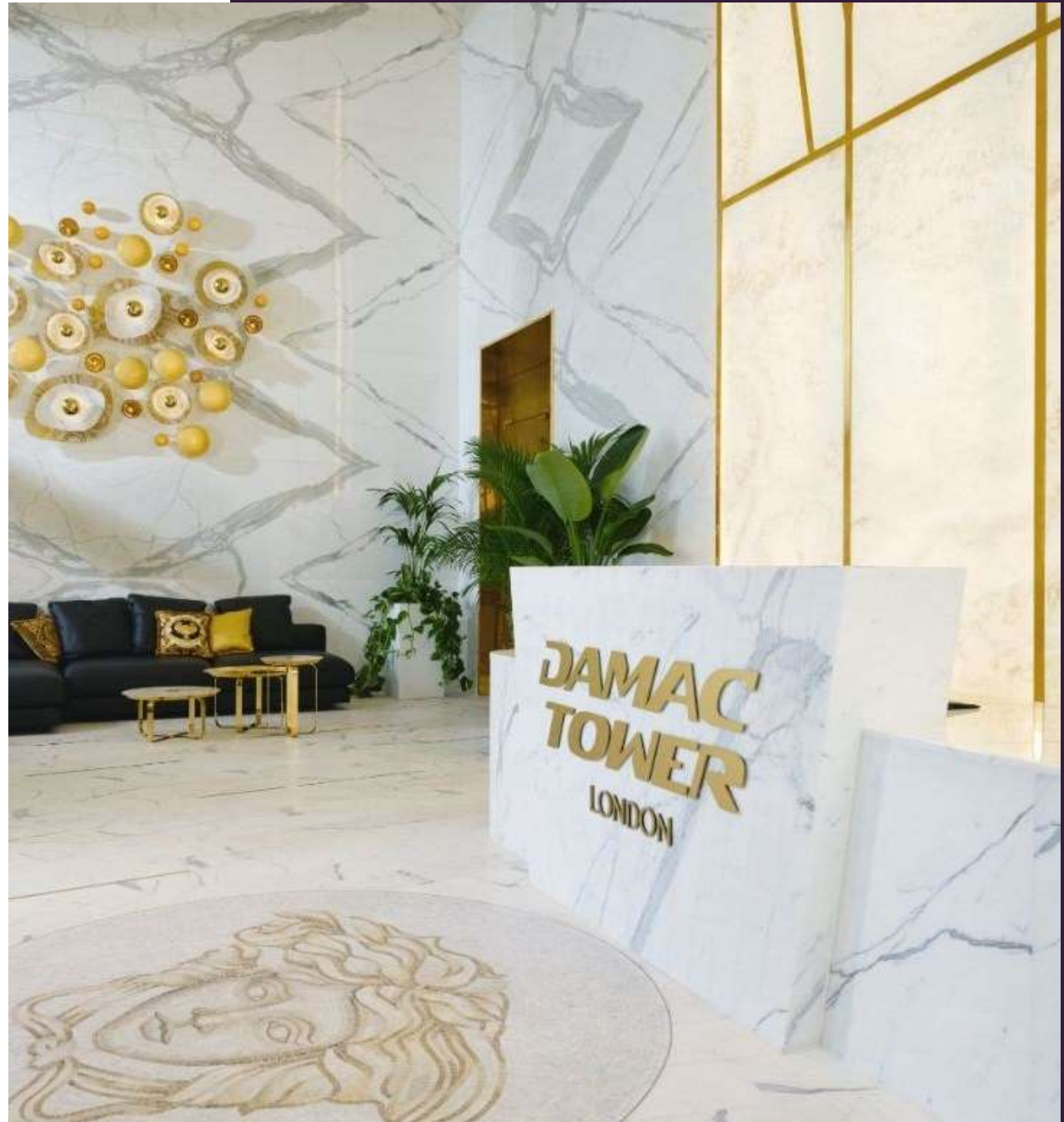
Select Damac Tower for:

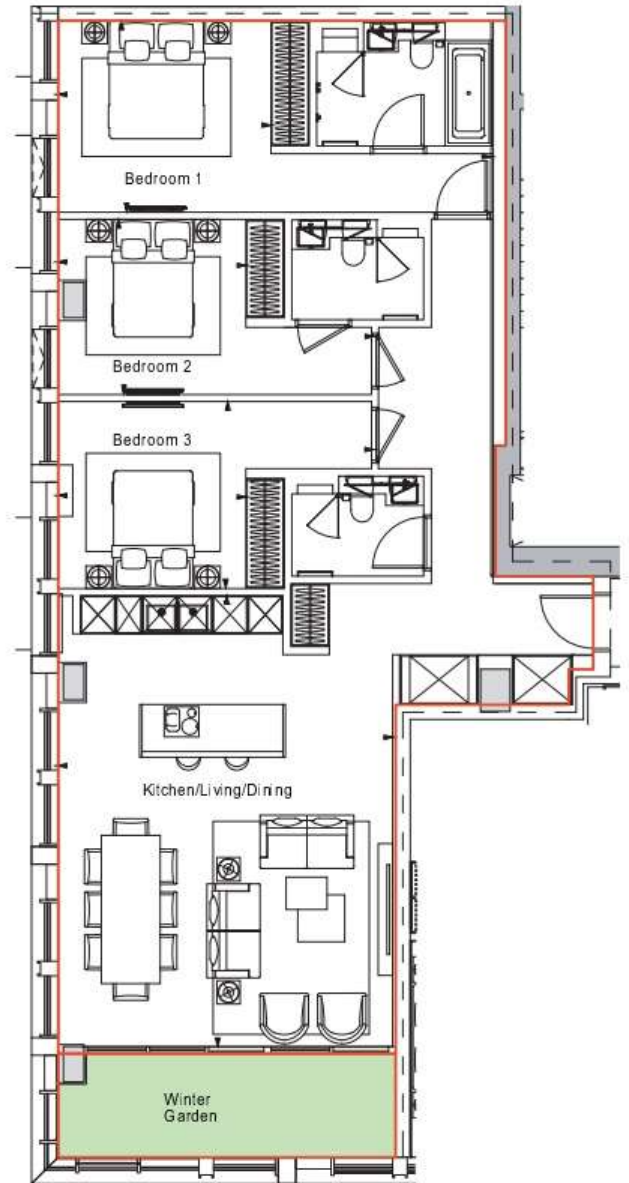
- Luxurious on-site amenities like a gym and pool
- Kitchens featuring Miele integrated appliances
- Fully fitted wardrobes in bedrooms
- 24-hour security and ground floor entrance CCTV
- Communal roof terrace
- Video phone entry system
- Designed by Versace
- Parking available through separate negotiation

Additional information:

Bedrooms: 3 bedrooms  
Bathrooms: 3 bathrooms  
Square Foot: 1,350 sq. ft  
Winter Garden: 109 Sq.ft.  
Price Range: £2,240,000

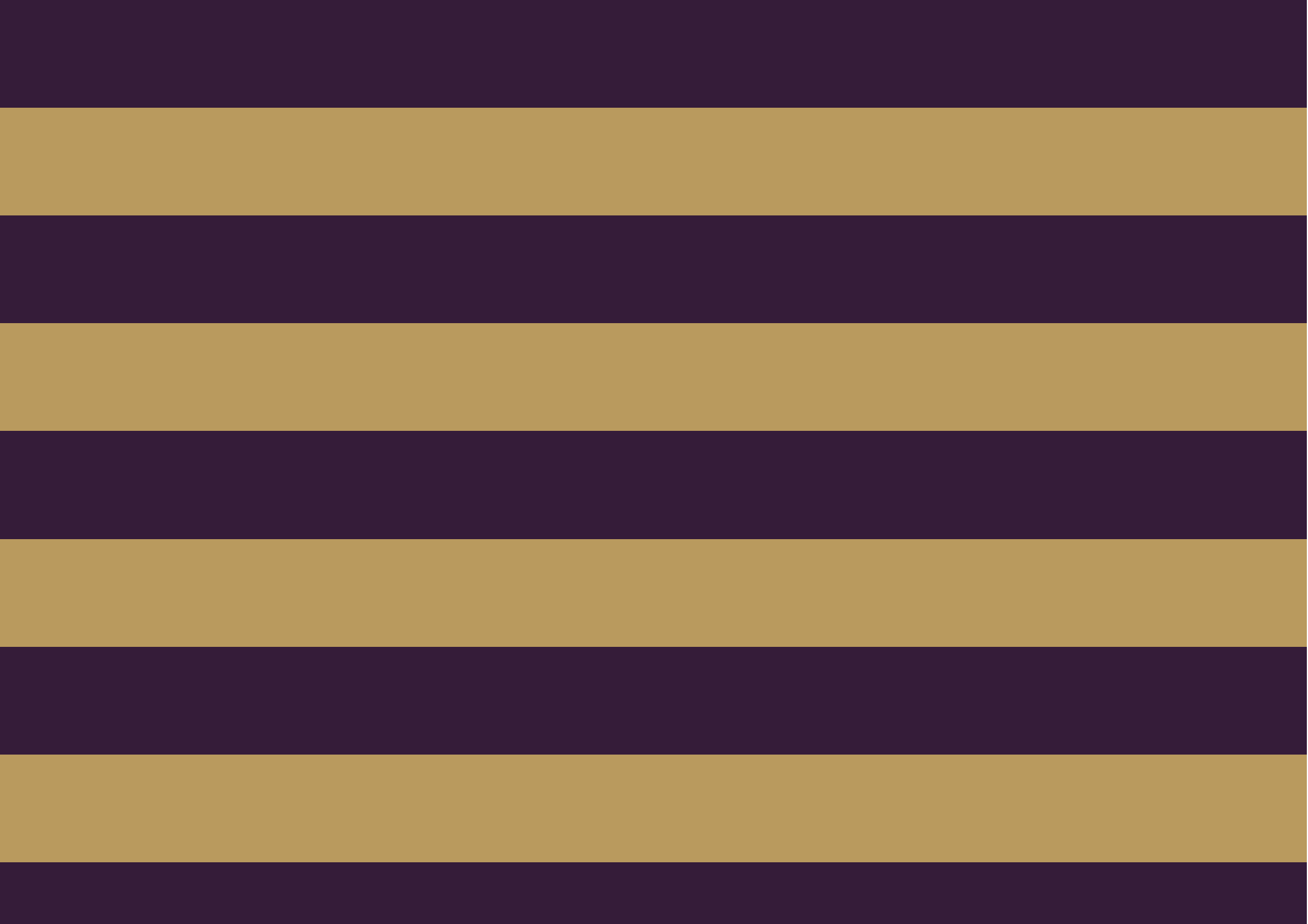
We have other units available in this development, kindly contact us for more information





Kitchen/Living/Dining	18' 8" x 25' 2"
Bedroom 1	24' 2" / 11' 11" x 10' 8"
Bedroom 2	17' 8" / 10' 6" x 9' 9"
Bedroom 3	17' 8" / 10' 6" x 10' 5"
Apartment Area	1350.6 ft <sup>2</sup>
Winter Garden	109.0 ft <sup>2</sup>
Total Area	1459.6 ft <sup>2</sup>







Global 1  
23 Berkeley Square  
London W1J 6JE  
T: +44 (0)20 3355 0191 W: [www.theglobal1.com](http://www.theglobal1.com)