




Upper Grosvenor Street, Mayfair

Price £9,500 pw





This impressive 4 bedroom/4 bathroom duplex apartment is situated in the heart of Mayfair. Beautifully presented ground and lower ground apartment with impressive high ceilings, lift access and air conditioning throughout is well-furnished and of approximately 4,291sq. ft. The property offers a spacious living room, separate dining room, kitchen, study, master suite with en suite and dressing room, three further bedrooms, two en suites, a separate bathroom, and two patios.

Upper Grosvenor Street runs west from the prestigious Grosvenor Square leading to Park Lane and the green spaces of Hyde Park. The property is within reach of the many amenities, restaurants and flagship designer stores offered by Mount Street, New Bond Street and their surrounding areas. The closest Underground stations are Bond Street and Marble Arch.

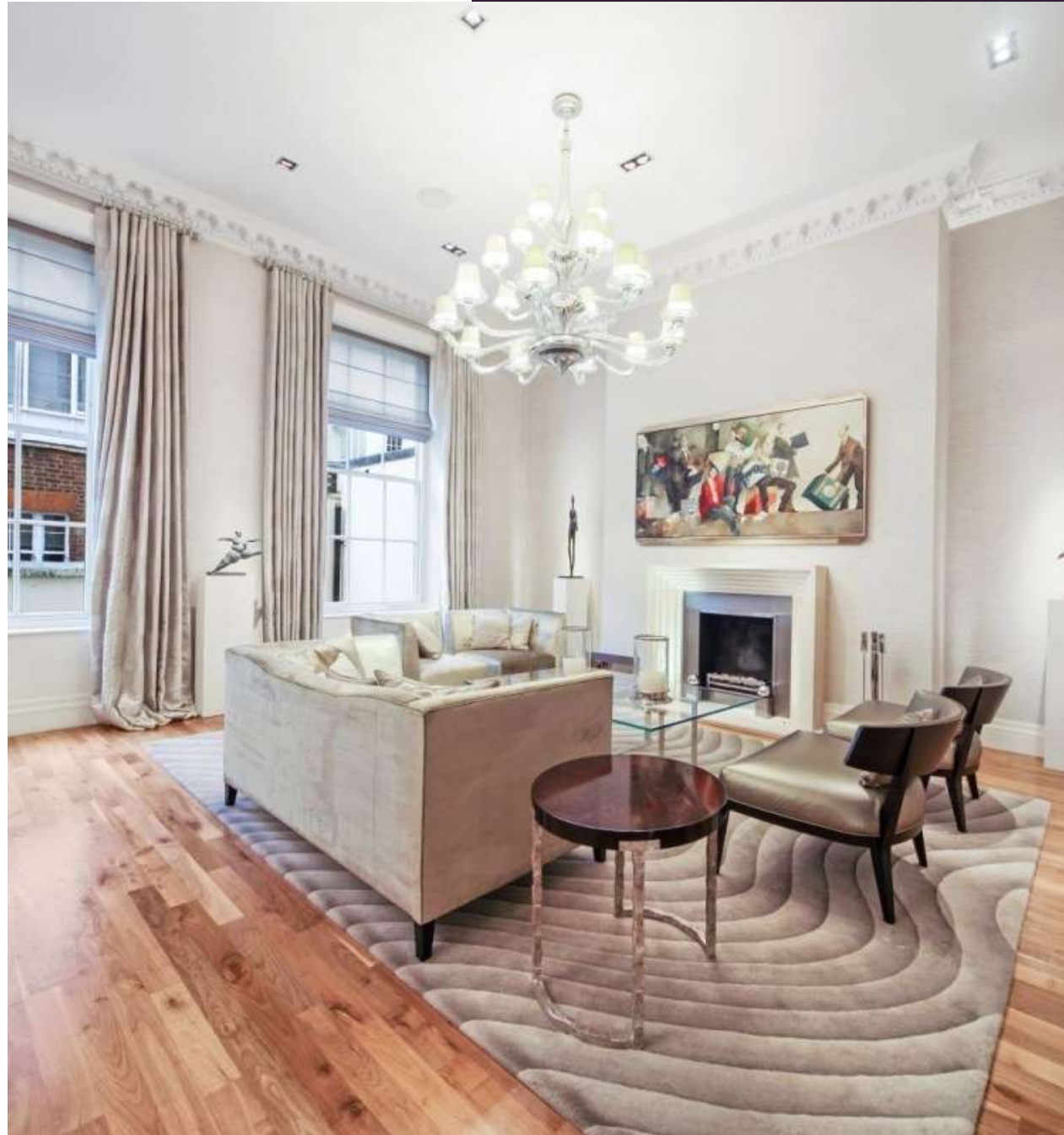






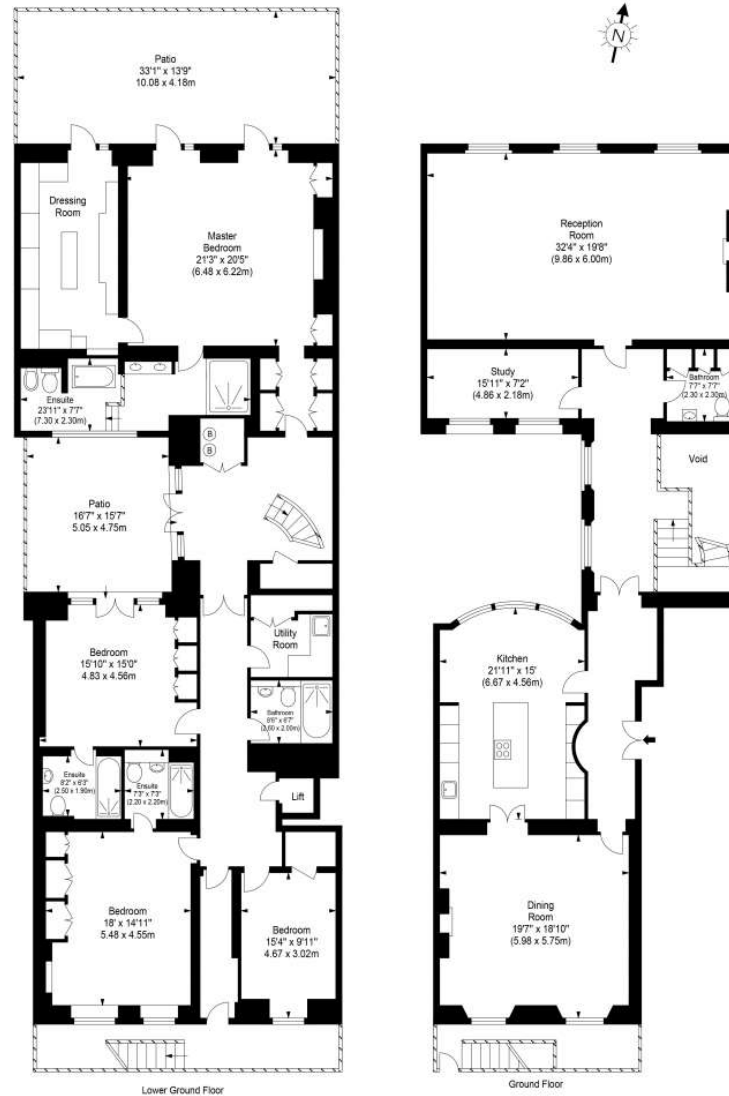
Features

- 4 Bedrooms
- 4 Bathrooms
- 1 Living room



Upper Grosvenor Street, London, W1K 2NA

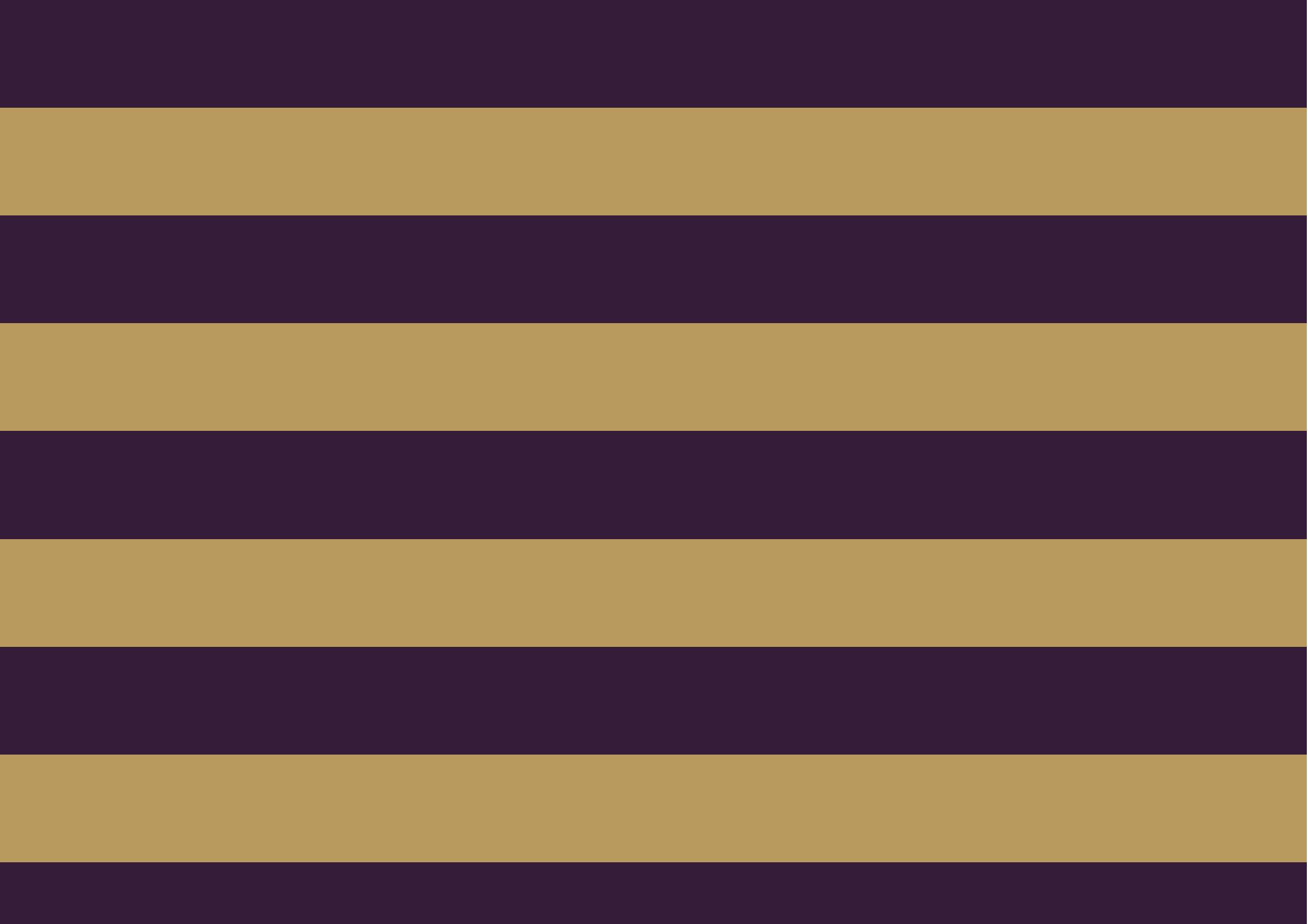
Approx. Gross Internal Area 4291 sq ft - 398.65 sq m
(Excluding Void & Lift)



Ref

Copyright THEBLÉUPLAN

Disclaimer : Floor plan measurements are approximate and are for illustrative purposes only
While we do not doubt the floor plan accuracy and completeness, you or your advisors should
conduct a careful, independent investigation of the property in respect of monetary valuation





Global 1
23 Berkeley Square
London W1J 6JE
T: +44 (0)20 3355 0191 W: www.theglobal1.com