



Buckingham Gate, St James`s

Price £25,000 pw



Luxurious Grade II listed eight-bedroom townhouse spanning 14,227 sqft across seven floors.

This fabulous property includes an outstanding fully fitted kitchen, dining room, living room, drawing room, entertainment room, media room, five dressing rooms, two courtyards, six large bedrooms with en suite bathrooms, two staff rooms, four shower rooms, four WCs, two studies, two balconies, two private terraces and a utility room.

The property further benefits from an array of world-class amenities, including underground parking, easy lift access, a bar, a pool, a gym, a sauna, a treatment room, two changing rooms, security and 24-hour concierge services.

Buckingham Gate neighbours Buckingham Palace, one of the most exclusive locations in London, providing easy access to London`s finest shops, restaurants, bars, clubs, museums, art galleries and green spaces. Particularly accessible areas from Buckingham Gate include Mayfair, Knightsbridge, Belgravia, Westminster and St James`s Park.

Transport links:

Stations within the vicinity include St James`s Park (0.4 miles, Circle and District lines), Westminster station (0.7 miles, Circle, District, and Jubilee lines), and Victoria station (0.4 miles, Gatwick Express, Southern, Thameslink, Southeastern, Circle, District, and Victoria lines).



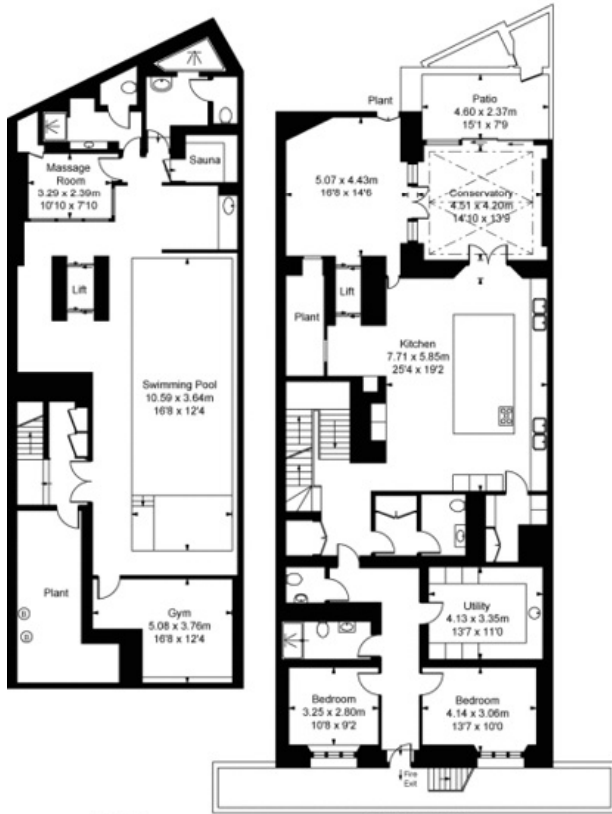




Features

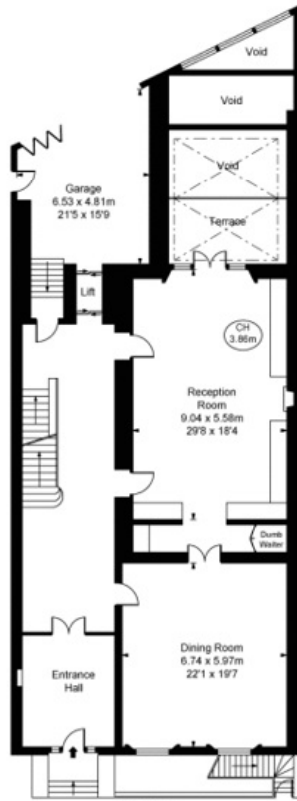
- 8 Bedrooms
- 9 Bathrooms
- 3 Living rooms



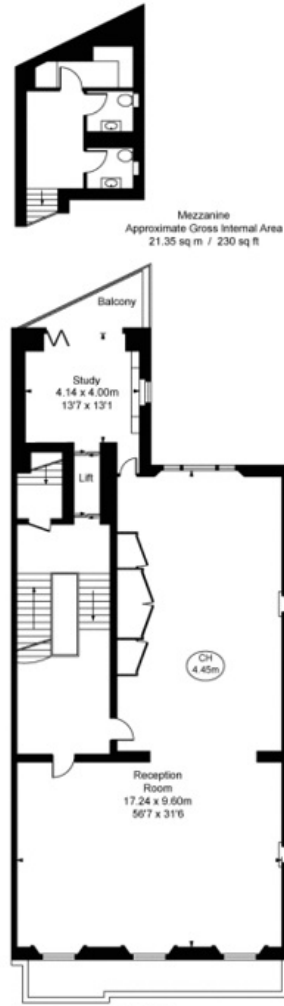


Basement
Approximate Gross Internal Area
175.20 sq m / 1,886 sq ft

Lower Ground Floor
Approximate Gross Internal Area
209.87 sq m / 2,259 sq ft

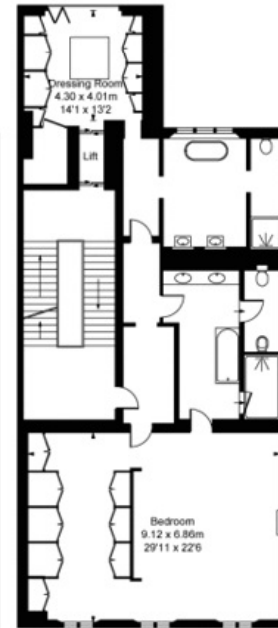


Ground Floor
Approximate Gross Internal Area
190.12 sq m / 2,046 sq ft

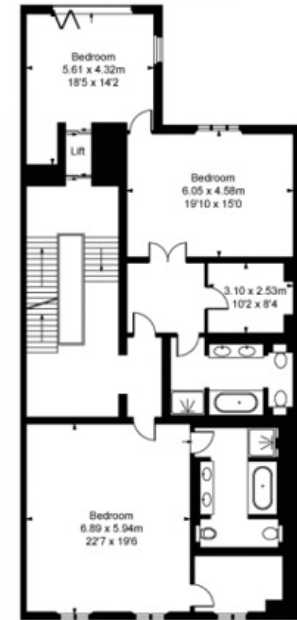


Mezzanine
Approximate Gross Internal Area
21.35 sq m / 230 sq ft

First Floor
Approximate Gross Internal Area
186.27 sq m / 2,005 sq ft



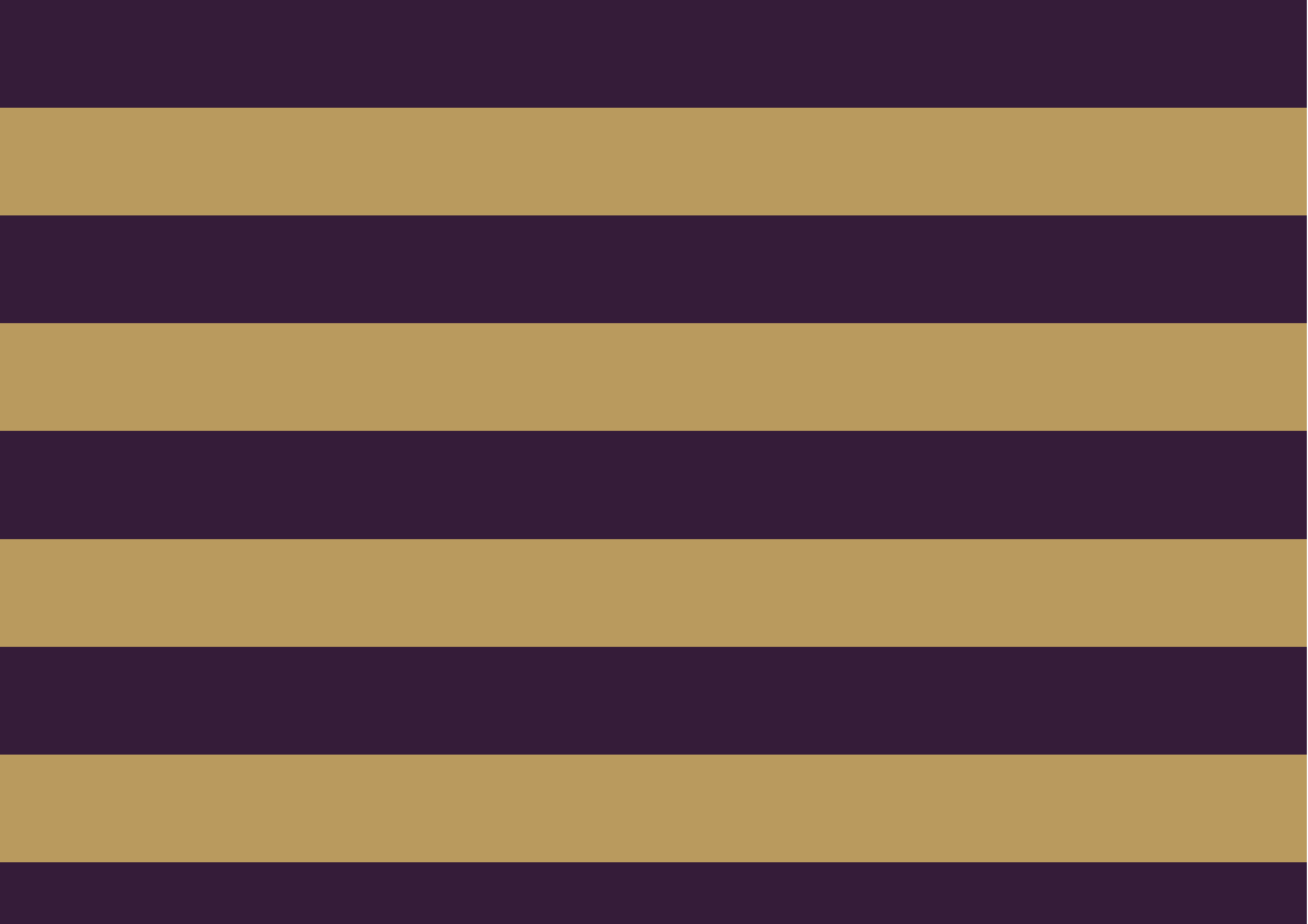
Second Floor
Approximate Gross Internal Area
182.14 sq m / 1,961 sq ft



Third Floor
Approximate Gross Internal Area
185.90 sq m / 2,001 sq ft



Fourth Floor
Approximate Gross Internal Area
170.89 sq m / 1,839 sq ft





Global 1
23 Berkeley Square
London W1J 6JE
T: +44 (0)20 3355 0191 W: www.theglobal1.com