



Harrington Road, South Kensington

Price £7,250,000





Beautifully furnished three bedroom penthouse apartment located in the area of South Kensington. This spectacular penthouse apartment with direct lift access and a panoramic terrace is luxuriously designed throughout with bespoke fixtures and fittings and also offers a dual aspect reception room, a 360° wrap-around terrace with separate gym, covered sun terrace and a fabulous Jacuzzi. The accommodation includes a 30` reception room, kitchen / breakfast room, utility room, master bedroom suite with dressing room and en-suite bathroom, two further double en-suite bedrooms and guest WC.

*Total Sq Ft:3,065 (284 Sq M) approx.

LOCAL AREA:

This property is within walking distance to the amenities of the ever popular area of South Kensington where you can find local shops, bars and restaurants.

LOCAL TRANSPORT LINKS:

The nearest station is South Kensington where you can catch the Circle, District and Piccadilly Lines.



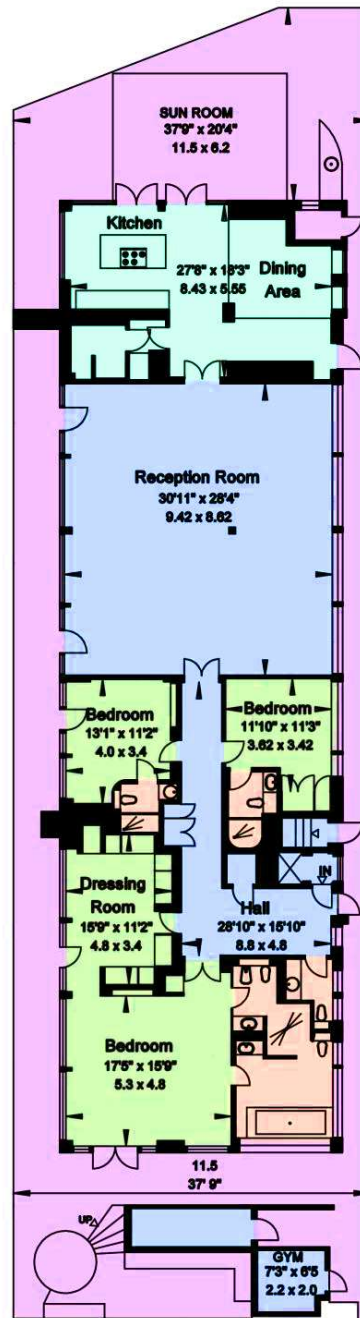




Features

- 3 Bedrooms
- 3 Bathrooms
- 1 Living room
- Balcony
- Lift



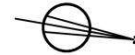


**HARRINGTON ROAD
LONDON SW7**

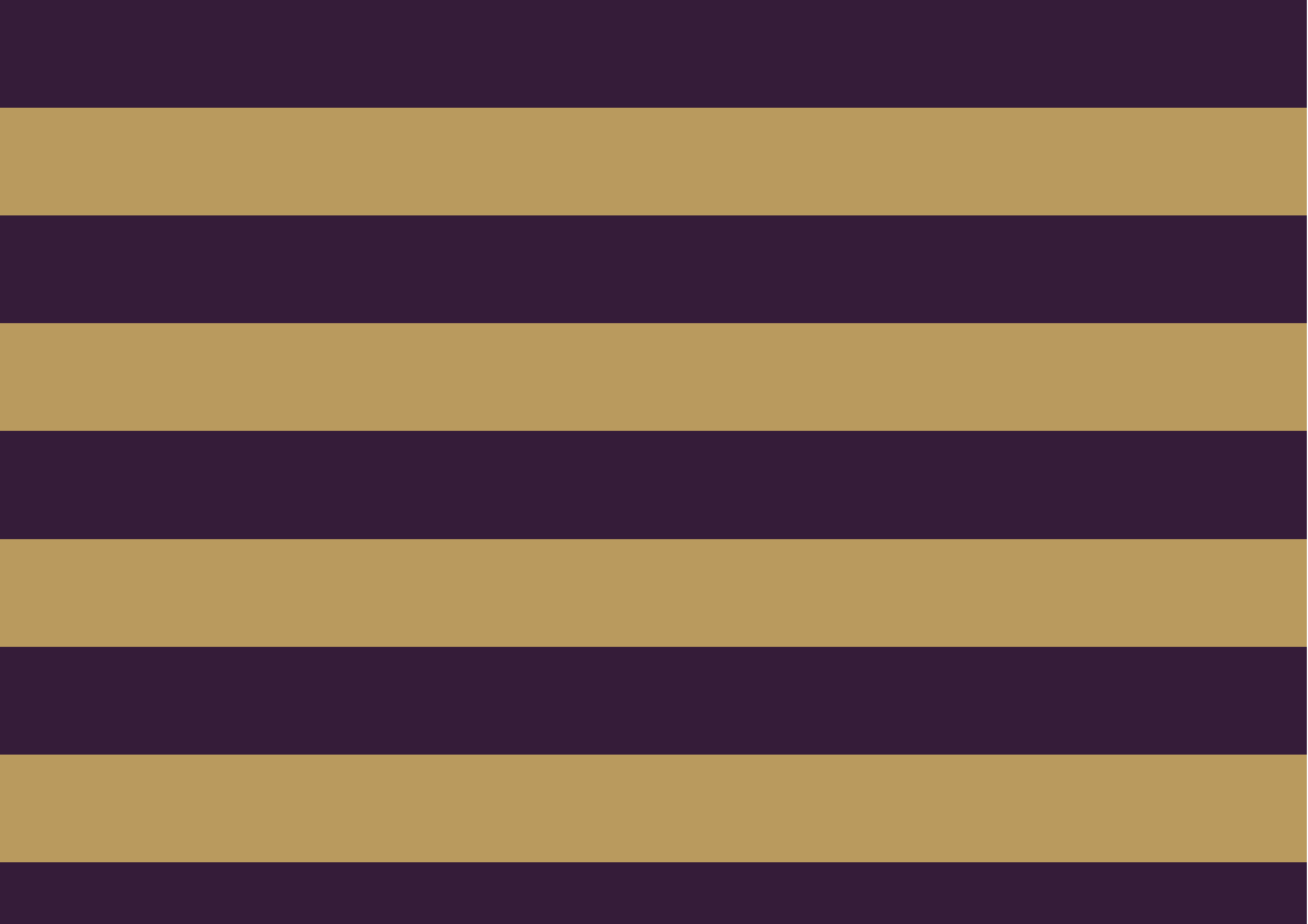
Gross Internal Area = 284 sq. metres
 (Including Sun Room & Gym) 3065 sq. feet

Gross External Area = 148 sq. metres
 1600 sq. feet

Total = 433 sq. metres/ 4665 sq. feet



SEVENTH FLOOR





Global 1
23 Berkeley Square
London W1J 6JE
T: +44 (0)20 3355 0191 W: www.theglobal1.com