




## **Merchant Square, Paddington**

Price £1,190 pw





This spacious interior designed three bedroom apartment is set within a modern block in the sought after Paddington Basin in W2.

This modern apartment comprises a beautiful reception room with a modern fitted open plan kitchen, three bedrooms, two bathrooms and ample storage space.

It is situated on the third floor of this prestigious building which features a concierge, lift service, CCTV and secure underground parking.

The apartment offers easy access to great transport links such as Paddington Train Station (Bakerloo, Hammersmith & City, Circle, District lines and Heathrow) Edgware Road (Circle, District and Bakerloo lines).



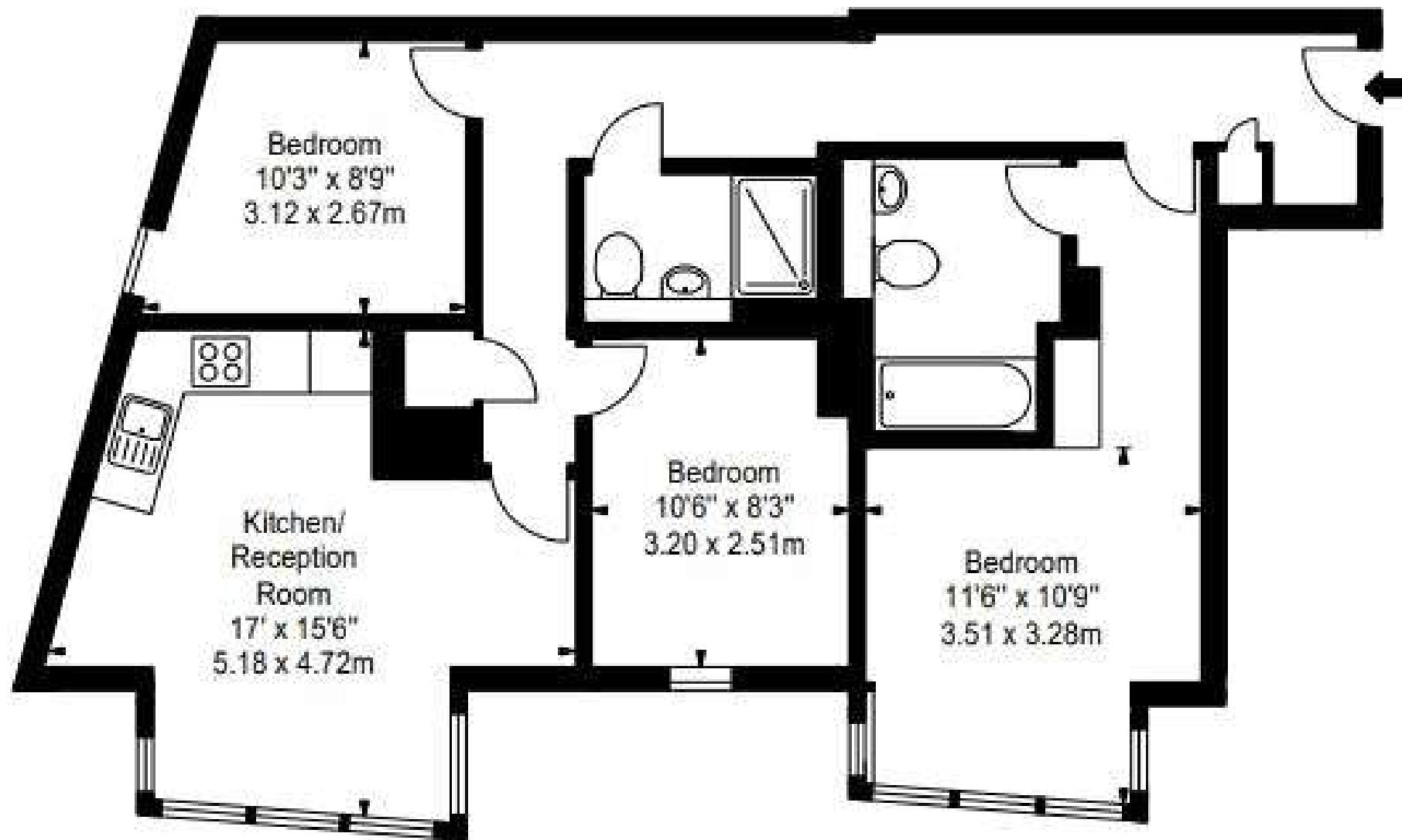




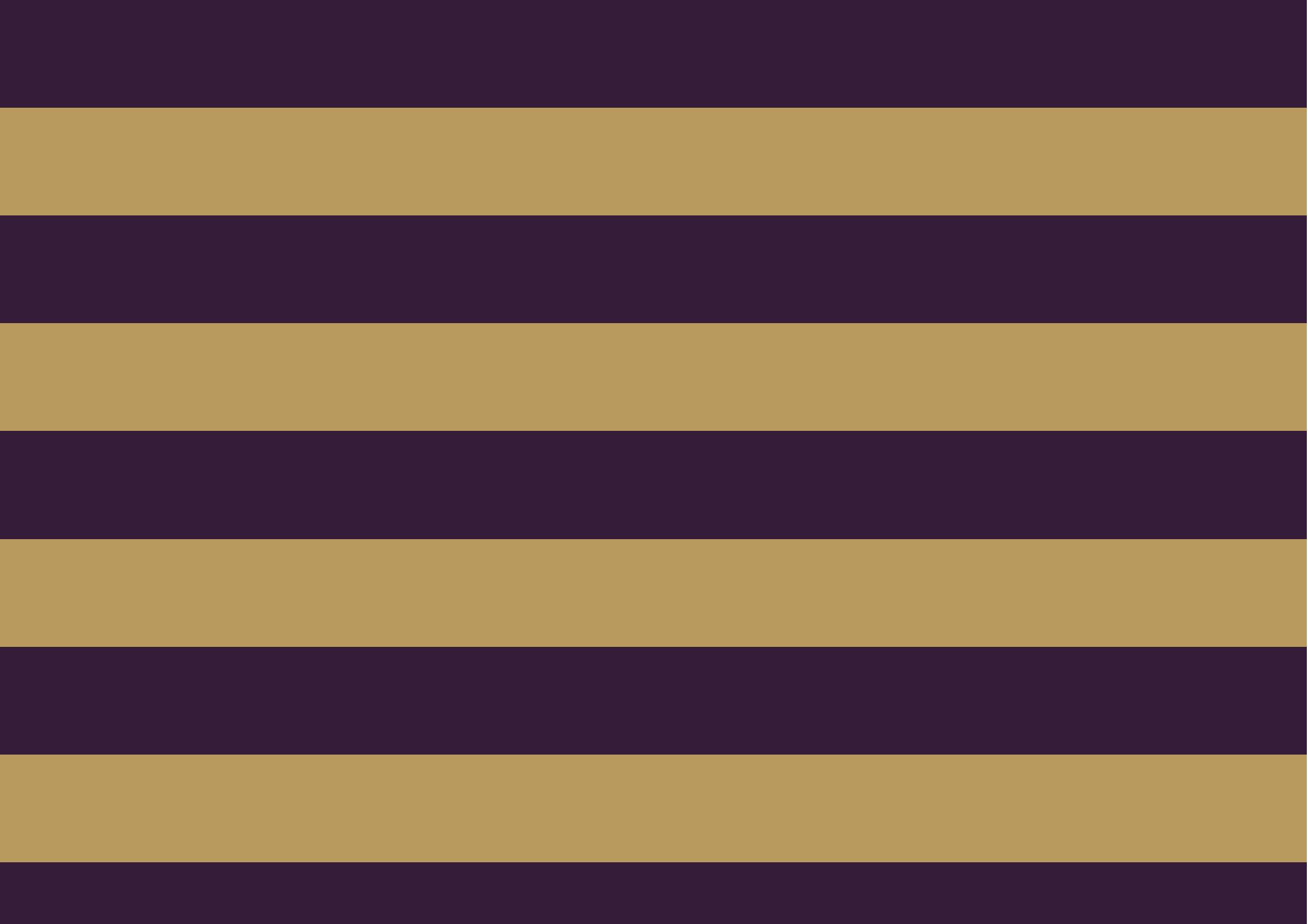
## *Features*

- 3 Bedrooms
- 2 Bathrooms
- 1 Living room
- Porter
- Lift











Global 1  
23 Berkeley Square  
London W1J 6JE  
T: +44 (0)20 3355 0191 W: [www.theglobal1.com](http://www.theglobal1.com)