



## Principal Tower, Shoreditch

Price £1,280,000



Alongside carefully crafted interiors consisting of a premium selection of one, two, and three-bedroom apartments, this stunning development also offers a 24 hour concierge service, the opportunity to acquire subterranean secure parking, lap pool, state of the art gym, spa, cinema, and residents` lounge.

Principal Tower is ideally located for central London living. With the City and Shoreditch on your doorstep, there`s plenty to do. From an evening out in Old Street, eating delicious street food in Brick Lane to wandering down Columbia Road flower market, there`s something for everyone.

Choose Principal Tower for:

- o Exclusive luxurious apartments
- o Iconic landmark status on the London skyline
- o Access to a resident`s gym, lap pool, and spa
- o 24-hour concierge services and a residents` lounge
- o Beautifully presented interiors with high-spec fittings
- o Fabulous private balconies or terraces in many apartments
- o Prestigious location in the heart of the financial district

Additional Information

Square Footage: 519 sq.ft.

Balcony Footage: 40 sq ft

Leasehold 987 years

Service Charge Estimated £11.85 per sq ft per annum

We have other units available in this development, kindly contact us for more information





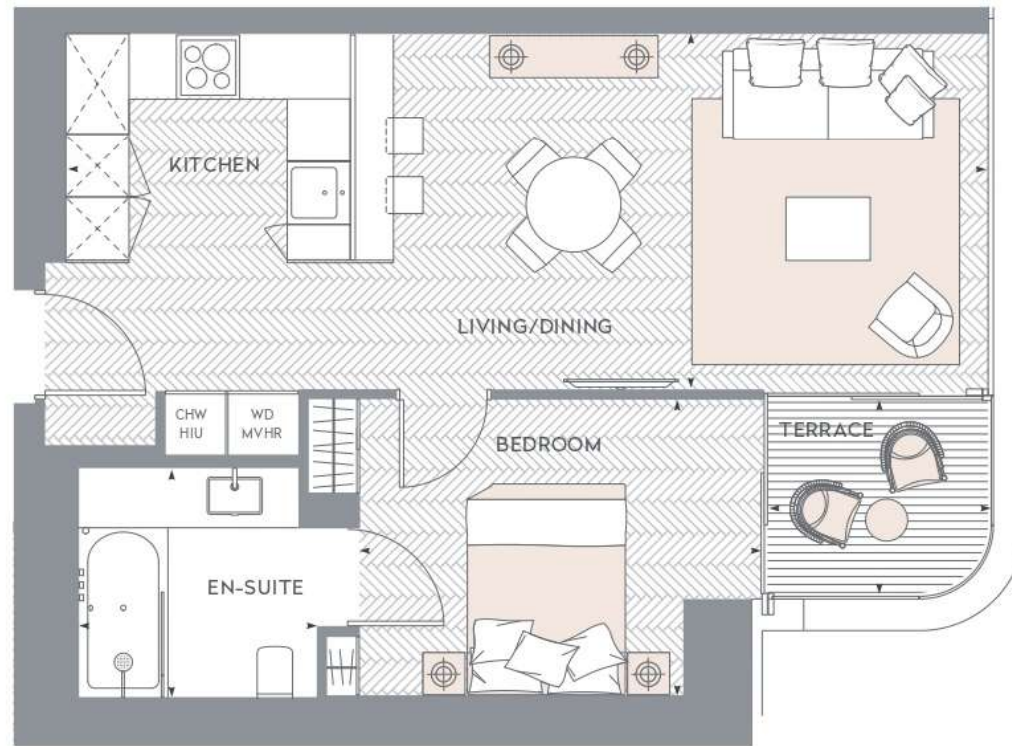
## ***Features***

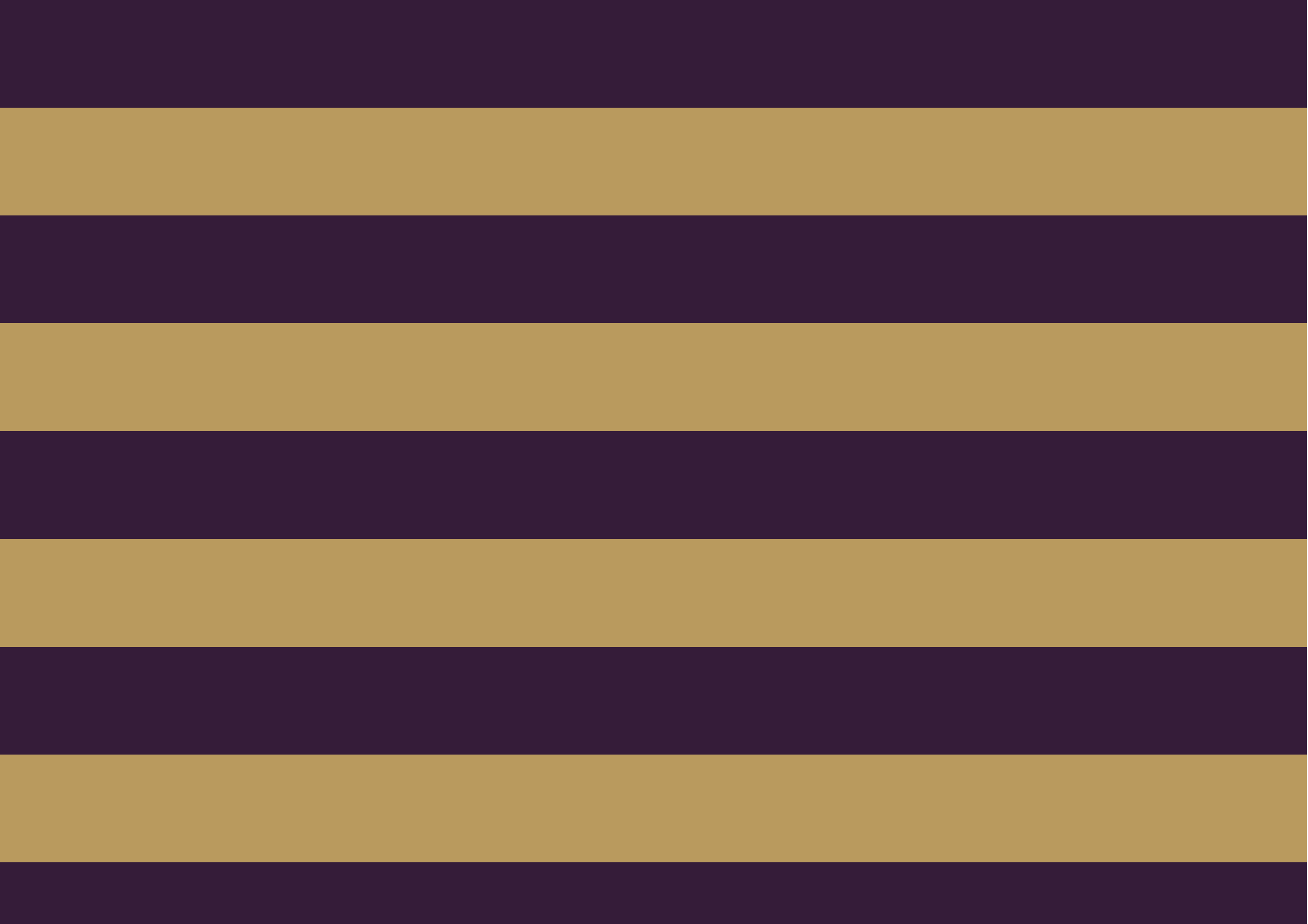
- 1 Bedroom
- 1 Bathroom
- 1 Reception
- Gym
- Swimming pool/Lap pool
- Spa
- Private balconies and terraces  
(Check with Sales Team)
- Prime Location



APARTMENT \_\_\_\_\_ 48.2m<sup>2</sup> / 519ft<sup>2</sup>  
TERRACE \_\_\_\_\_ 3.8m<sup>2</sup> / 40ft<sup>2</sup>

Living/dining \_\_\_\_\_ 5.69 x 3.33m / 18'8" x 10'9"  
Kitchen \_\_\_\_\_ 3.11 x 3.33m / 10'2" x 10'11"  
Bedroom \_\_\_\_\_ 3.83 x 2.80m / 12'6" x 9'2"  
En-suite \_\_\_\_\_ 2.07 x 2.21m / 6'10" x 7'3"  
Terrace \_\_\_\_\_ 2.12 x 1.87m / 6'11" x 6'1"









Global 1  
23 Berkeley Square  
London W1J 6JE  
T: +44 (0)20 3355 0191 W: [www.theglobal1.com](http://www.theglobal1.com)